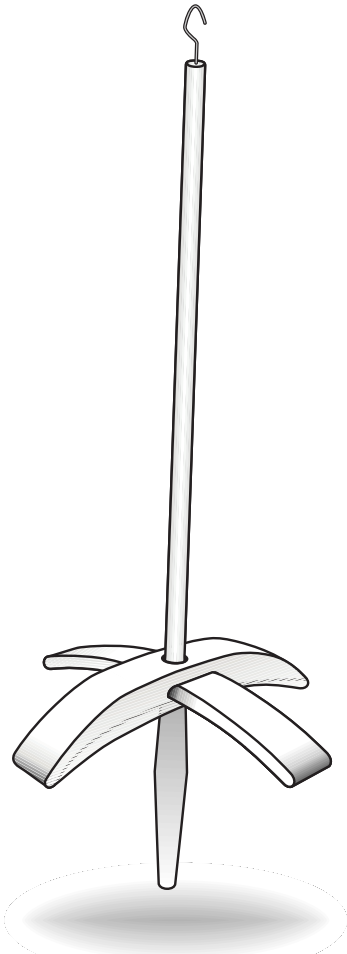
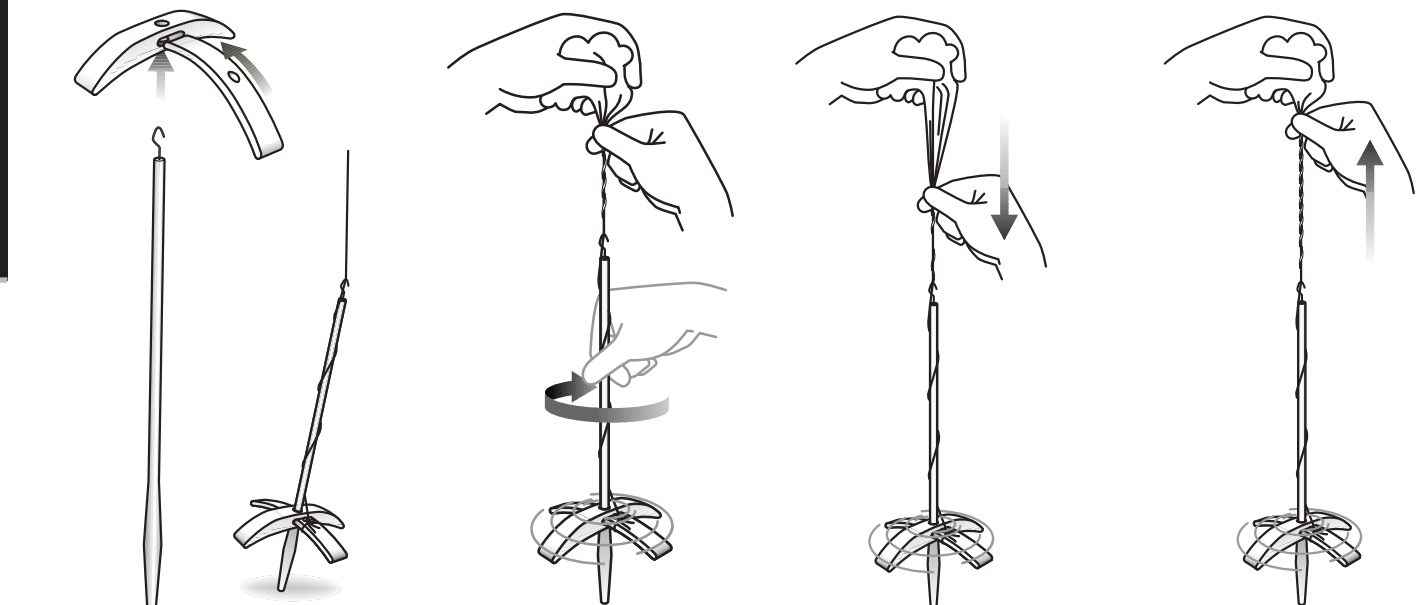


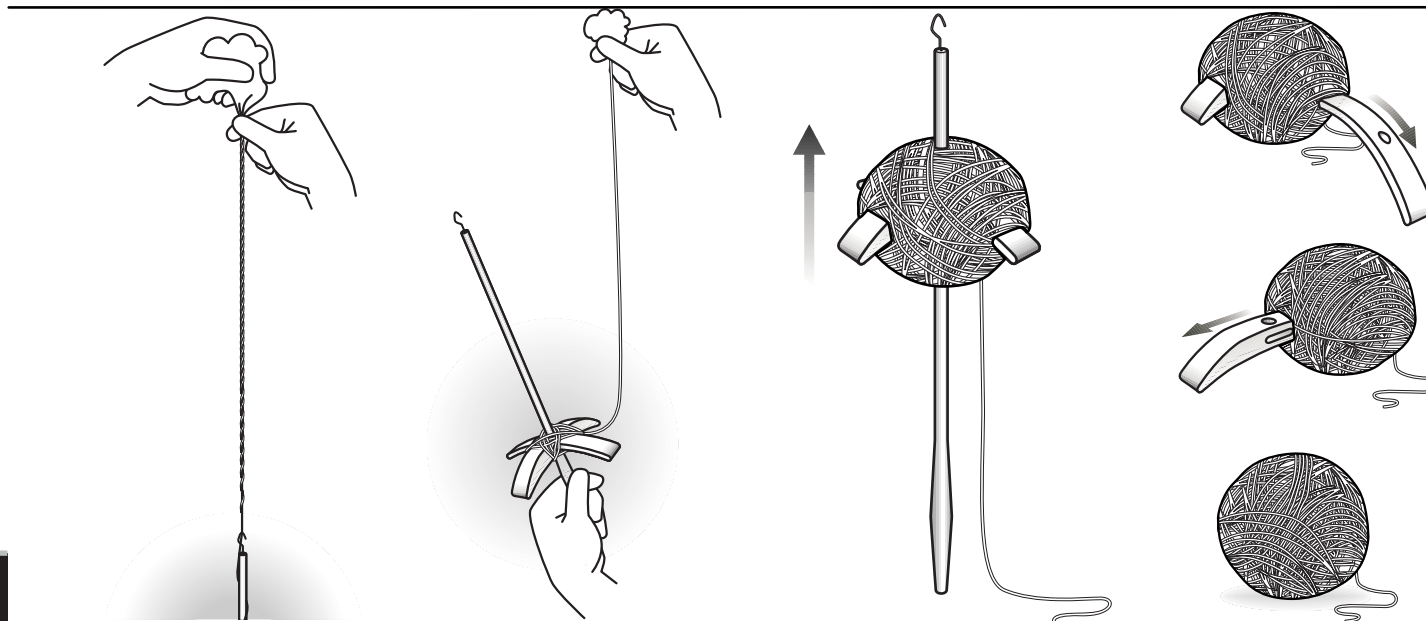
TURKISH DROP SPINDLE



DSTK24042014V3



- 1** Assemble the spindle. Tie a leader (a piece of yarn 1m/40") to the shaft under the whorl, wrap it around the shaft and under the hook.
- 2** Spin the spindle clockwise and allow the leader to join onto your prepared fibres.
- 3** While keeping the leader pinched with one hand, draft the fibres down.
- 4** Slowly slide your fingers back up the drafted fibres allowing the twist to follow. Once twisted, the yarn will support the weight of the spindle.



- 5** Keep the spindle spinning while drafting more yarn until the spindle reaches the floor.
- 6** Wind the yarn around the cross bars to form a ball. Then repeat the process 1 - 6 until you have a full ball.
- 7** Slide the ball and cross bars off the shaft, first remove the narrow cross bar, then the thicker bar. Now your ball is ready to use either as a single ply or ply 2 together with the spindle spinning anti-clockwise.